

After completing the chart, label each body part you observed on the drawing of the mealworm. Use neat label lines that are parallel to the top and bottom of the paper and your best handwriting. The label line should touch the body part on the picture. If the body part spans several spots on the mealworm, use brackets (see example).

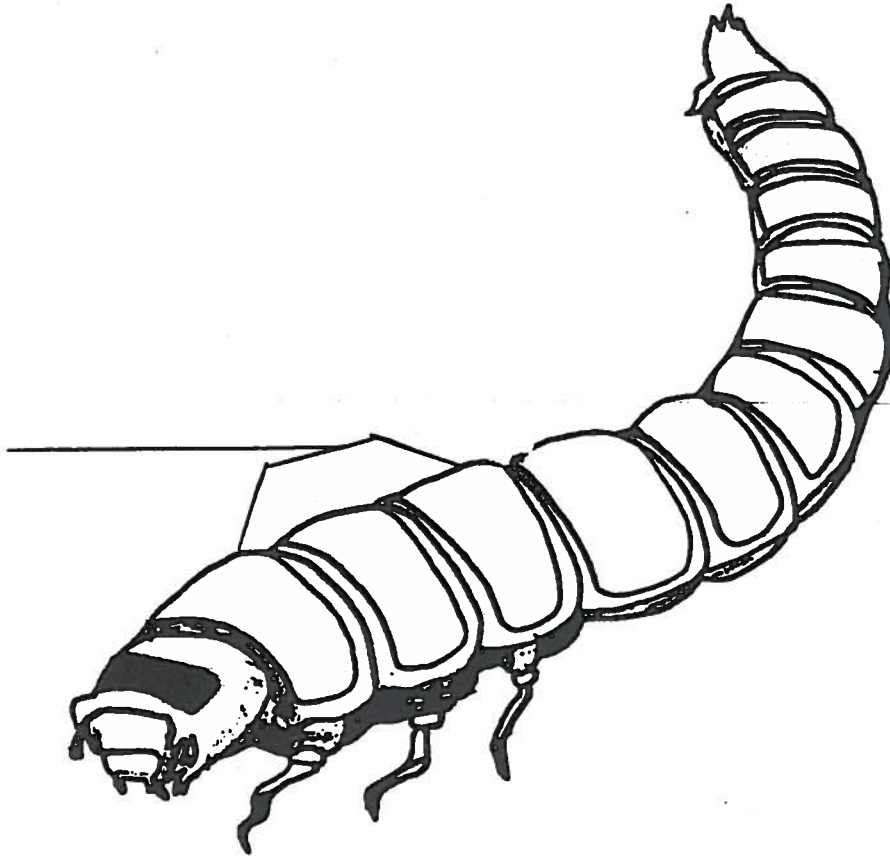


Chart is complete	0	2	4
Notes are complete	0	2	4
Notes are of good quality	0	2	4
Mealworm diagram is labeled	0	2	4
Labels are correct	0	2	4
Labels are neat	0	2	4

Total points _____ / 24 Grade _____